

March 31, 2008

Dear Parents:

On March 12, 2008, the Governing Board of San Marcos Unified School District approved the Attendance Area Revision Committee's recommendation for attendance area changes for the District's elementary and middle schools.

The committee's recommendation was based on the following needs:

- The creation of the attendance area for Joli Ann Leichtag Elementary, which will open this next school year
- Relieve the overcrowding at Paloma Elementary
- Relieve the overcrowding and create room for the projected growth facing San Elijo Elementary
- Relieve the overcrowding at Discovery Elementary

It is the District's intent to develop attendance areas that will not require change for several years. Proximity to schools was viewed as the primary criteria for the development of attendance areas.

You currently reside in an area that is affected by these changes. This change will move your child(ren) from San Elijo Middle to San Marcos Middle School for next school year (2008-2009).

You may view a map of the changes at the District's web site (www.smusd.org/) or at any of our elementary schools. Go to the "**Attendance Area Street Directory**" link on the District's home page to locate the Tract Code for a street. Tract Codes that are changing are listed on the link labeled "**Realignment of Elementary Tract Code Areas.**" See link labeled "**Elementary School Attendance Areas 2008-2009**" for a map of the approved changes.

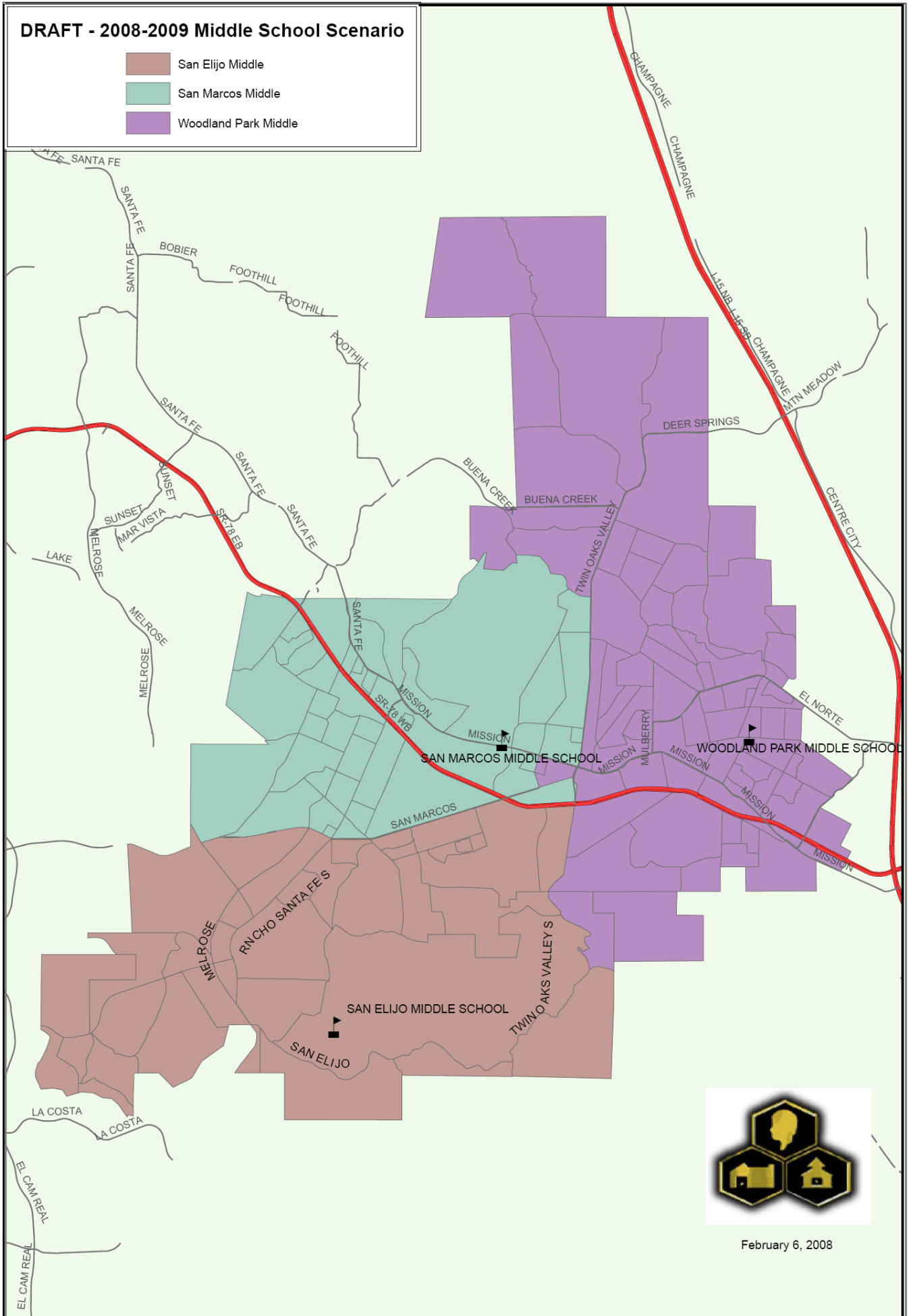
The District will help to make this transition as smooth as possible. All of your child(ren)'s records will be transferred to the new school at the end of this school year. Feel free to contact your new school if you have questions or concerns.

Sincerely,

Len Judd
Assistant Superintendent
Human Resources

DRAFT - 2008-2009 Middle School Scenario

-  San Elijo Middle
-  San Marcos Middle
-  Woodland Park Middle



February 6, 2008